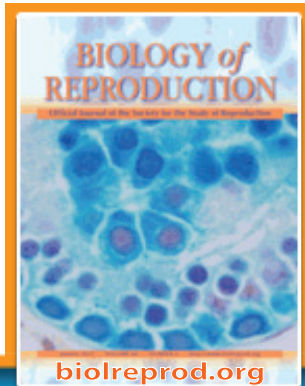


# BIOLOGY OF REPRODUCTION



Consistently top-ranked journal in reproductive biology  
Five-year impact factor 3.613

First reported in *BOR*:

JM Deng, K Satoh, H Wang, H Chang, Z Zhang, MD Stewart, AJ Cooney, and RR Behringer. **Generation of Viable Male and Female Mice from Two Fathers.** 2011.

M Amit, C Shariki, V Margulets, and J Itskovitz-Eldor. **Feeder Layer- and Serum-Free Culture of Human Embryonic Stem Cells** 2004.

L Aghajanova, JA Horcajadas, FJ Esteban, and LC Giudice. **The Bone Marrow-Derived Human Mesenchymal Stem Cell: Potential Progenitor of the Endometrial Stromal Fibroblast.** 2010.

J Suzuki, Jr, J Therrien, F Filion, R Lefebvre, AK Goff, F Perecin, FV Meirelles, and LC Smith. **Loss of Methylation at H19 DMD Is Associated with Biallelic Expression and Reduced Development in Cattle Derived by Somatic Cell Nuclear Transfer.** 2011.

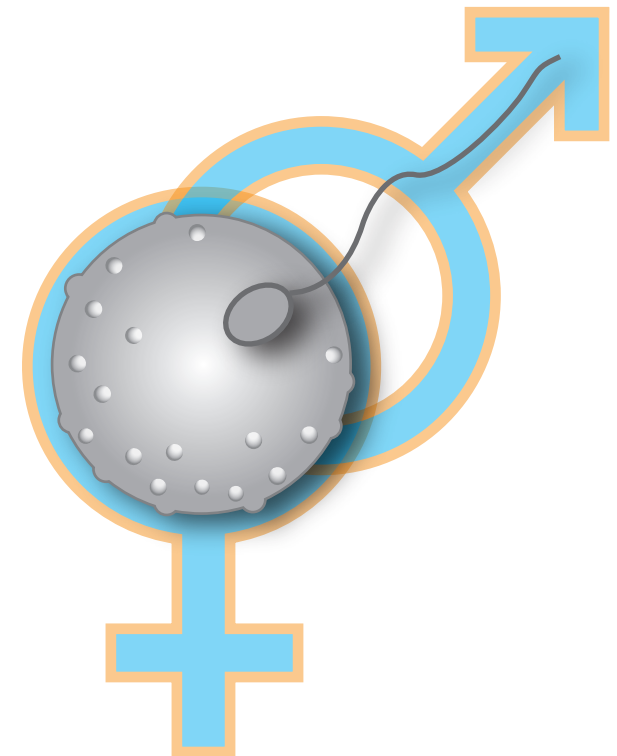
# SSR

## Society for the Study of Reproduction

1619 Monroe Street  
Madison, WI 53711-2063  
Phone: (608) 256-2777  
Fax: (608) 256-4610  
E-mail: [ssr@ssr.org](mailto:ssr@ssr.org)  
On the web at [www.ssr.org](http://www.ssr.org)

brochure designed by  
[rjpolllock@hotmail.com](mailto:rjpolllock@hotmail.com)

# SSR



## Society for the Study of Reproduction



# Society for the Study of Reproduction

*“... promoting the study of human and animal reproduction, as it relates to medicine, agriculture, and basic biology.”*

## WHO WE ARE

The Society for the Study of Reproduction (SSR) was founded in 1967 to bring together veterinarians, physicians, and basic researchers in the field of reproductive biology. Today, our members come from 50 countries around the world.

SSR members have made key contributions to stem cell biology, transgenesis, treatment of infertility, contraception, livestock production, pregnancy health, treatment of reproductive system cancers, and identification of environmental contaminants.

Our members are internationally recognized. They include members of the U.S. National Academy of Sciences, and recipients of the Lasker Award, the Wolf Prize, the Grand Prix Charles-Leopold Mayer, and the International Prize for Biology.

*The Society nurtures and supports young scientists and research trainees by giving them unparalleled opportunities to present their work and interact with the best scientists in the world that focus on solving important problems in reproduction. The scientific research conducted by the members of SSR is outstanding and unequivocally necessary to improve reproductive health and welfare of animals and humans.*

SSR Member  
Thomas Spencer



## MEMBERSHIP BENEFITS

- Free access to the Society's journal, *Biology of Reproduction (BOR)*
- No page charges for publication in *BOR*
- Discounts on annual meeting registration—for trainees, discount is greater than total membership cost
- The Annual Meeting—an opportunity to interact with leading reproductive biologists and gain national and international recognition for your work
- Representation and resources on policy issues such as research funding, stem cell research, and animal use

## AN EMPHASIS ON TRAINEES

Postdoctoral fellows, graduate students, and undergraduates are welcomed as trainee members.

SSR currently has more than 600 trainee members. In addition to discounts on meeting registration, trainee members are eligible for travel grants and may compete for presentation awards.

Trainee members plan a symposium at the Annual Meeting, are involved in the decision-making of the Society as committee members, and are represented on the Board of Directors.

*SSR welcomed women from the beginning...I have loved the openness and non-elitism of this society. I was its first female president in 1974, and I have been followed as president by many other women. Not surprisingly, the Society has also welcomed trainees, giving them travel awards and prizes for excellent papers and places on the governing board...The annual SSR meeting was always the favorite yearly science event for me and my trainees.*

Former SSR President  
Neena Schwartz